

## Annual Management Report of Fund Performance

for the financial year ended August 31, 2021

*All figures are reported in Canadian dollars unless otherwise noted.*

This annual management report of fund performance contains financial highlights but does not contain the complete annual financial statements of the investment fund. You can get a copy of the annual financial statements at your request, and at no cost, by calling toll-free at 1-888-888-3863, by writing to us at Renaissance Investments, 1500 Robert-Bourassa Boulevard, Suite 800, Montreal, QC, H3A 3S6, or by visiting our website at [www.renaissanceinvestments.ca](http://www.renaissanceinvestments.ca) or SEDAR at [www.sedar.com](http://www.sedar.com).

Unitholders may also contact us using one of these methods to request a copy of the investment fund's interim financial report, proxy voting policies and procedures, proxy voting disclosure record, or quarterly portfolio disclosure.

### Management Discussion of Fund Performance

#### Investment Objective and Strategies

Investment Objective: Renaissance Global Science & Technology Fund (referred to as the *Fund*) seeks to obtain long-term capital appreciation by investing in a diversified portfolio of global companies involved mainly in telecommunications, biotechnology, computer hardware and software, medical services, and other scientific and technology-based companies.

Investment Strategies: The Fund uses fundamental bottom-up research to construct a well-diversified portfolio that focuses on stocks expected to outperform the sector over future periods.

#### Risk

The Fund is a global equity fund that is suitable for long-term investors who can tolerate medium to high investment risk.

For the period ended August 31, 2021, the Fund's overall level of risk remains as discussed in the simplified prospectus.

#### Results of Operations

The Fund's Portfolio Advisor is CIBC Asset Management Inc. (referred to as *CAMI*, the *Manager* or the *Portfolio Advisor*). The commentary that follows provides a summary of the results of operations for the period ended August 31, 2021. All dollar figures are expressed in thousands, unless otherwise indicated.

The Fund's net asset value increased by 62% during the period, from \$188,054 as at August 31, 2020 to \$303,842 as at August 31, 2021. Net sales of \$67,654 and positive investment performance resulted in an overall increase in net asset value.

Class A units of the Fund posted a return of 21.3% for the period. The Fund's benchmarks, the MSCI World Information Technology Index and the MSCI World Index (referred to as the *primary benchmarks*), returned 27.5% and 26.4%, respectively, for the same period. The Fund's return is after the deduction of fees and expenses, unlike the benchmarks' return. See the section *Past Performance* for the returns of other classes of units offered by the Fund.

The COVID-19 pandemic continued to have a significant impact on the global economy during the period. Near the end of 2020, a number of

COVID-19 vaccines showed higher-than-expected efficacy rates during their final clinical trials and were approved by health authorities.

Vaccine approvals, rollouts and economic reopenings drove positive investor sentiment, primarily in the U.S., where reopening led the rest of the world. Vaccination campaigns accelerated in Canada, the U.S. and Europe, but many developing nations were much further behind.

The U.S. presidential election became the centre of attention in October and November of 2020, fuelling market volatility. Following the outcome of the election, the new U.S. administration moved quickly to pass a new fiscal package to address ongoing lockdown measures.

After a strong recovery, driven by the reopening of economies, the momentum of economic growth began to fade. Inflationary pressures on freight, commodities and goods were driven by the economic recovery, historically low inventories and supply chain challenges.

However, inflation concerns eased somewhat as investors largely shifted to align with the U.S. Federal Reserve Board's (referred to as the *Fed*) view that the sharp increase in inflation should prove to be temporary. The emergency measures implemented by central banks and governments to ensure that liquidity remained abundant helped to improve the returns of higher-risk assets. At its June meeting, the Fed upgraded its near-term growth and inflation forecasts. A number of Fed participants also indicated that they expected the first interest rate increase to come in early 2023, sooner than investors had expected.

A significant overweight allocation to the consumer discretionary sector detracted from the Fund's performance. Individual detractors from performance included significantly overweight holdings in MasterCard Inc., Takeda Pharmaceutical Co. Ltd. and Alibaba Group Holding Ltd. MasterCard continued to be negatively affected by pandemic-related travel reductions, which had a negative impact on cross-border volumes. Takeda Pharmaceutical's shares were affected by concerns regarding the durability of its base business and its higher debt levels than most of its peers. Alibaba faced increased regulatory scrutiny.

A significant overweight allocation to the communication services sector contributed to the Fund's performance. Individual contributors to the Fund's performance included significant overweight holdings in IAC/InterActiveCorp, Unity Software Inc. and Sea Ltd.

IAC/InterActiveCorp's share price rose after the company announced the spin-out of an undervalued asset. Unity Software's shares performed well after a successful initial public offering. Sea led e-commerce growth in Southeast Asia.

The Portfolio Advisor added new holdings in Mersana Therapeutics Inc., Ascendis Pharma AS, Deciphera Pharmaceuticals Inc., Sarepta Therapeutics Inc. and Silk Road Medical Inc. These additions were made to increase the Fund's exposure to biotechnology to reflect an anticipated change in the benchmark with higher exposure to the health care sector.

The Portfolio Advisor also added a holding in MongoDB Inc. as it is a major disruptor in the database market with a cloud offering that is gaining traction. Cloudflare Inc. was added for its leadership in network-as-a-service, providing increasing network capabilities through the cloud and further expanding into edge computing capabilities. Zscaler Inc. was purchased as it provides exposure to cloud security as more companies transition to the cloud.

A holding in Alphabet Inc. was increased as it is expected to benefit from a rebound in advertising spending, particularly for travel, in 2021. CVS Health Corp. and Takeda Pharmaceutical were both added to in order to increase the Fund's exposure to health care with the anticipated benchmark change.

NVIDIA Corp. was eliminated from the Fund as a result of increased risk from unsustainable cryptocurrency demand for graphics processing units. The Trade Desk Inc. and Unity Software Inc. were both sold to fund new investments.

### Recent Developments

Effective September 1, 2021, CAMI, as manager, will pay the Fund's operating expenses, other than certain expenses, in exchange for the payment by the Fund of an annual fixed rate administration fee. This fee will apply to all of the Fund's classes, other than Class O, and will be equal to a specified percentage of the net asset value of each class of the Fund.

The COVID-19 pandemic and the restrictions imposed by governments around the world to limit its spread have disrupted the global economy and financial markets in unprecedented and unpredictable ways. The COVID-19 outbreak may adversely affect the performance of the Fund.

### Related Party Transactions

Canadian Imperial Bank of Commerce (referred to as *CIBC*) and its affiliates have the following roles and responsibilities with respect to the Fund, and receive the fees described below in connection with their roles and responsibilities.

#### *Manager, Trustee, and Portfolio Advisor of the Fund*

CAMI, a wholly-owned subsidiary of CIBC, is the Fund's Manager, Trustee, and Portfolio Advisor. As Manager, CAMI receives management fees with respect to the Fund's day-to-day business and operations, calculated based on the net asset value of each respective class of units of the Fund as described in *Management Fees*. As Trustee, CAMI holds title to the Fund's property (cash and securities) on behalf of its unitholders. As Portfolio Advisor, CAMI provides, or arranges to provide for, investment advice and portfolio management services to the Fund. CAMI also compensates dealers in connection

with their marketing activities regarding the Fund. From time to time, CAMI may invest in units of the Fund.

#### *Distributor*

Dealers and other firms sell units of the Fund to investors. These dealers and other firms include CAMI's related dealers such as the CIBC Investor's Edge discount brokerage division of CIBC Investor Services Inc. (referred to as *CIBC ISI*), the CIBC Imperial Service division of CIBC ISI, and the CIBC Wood Gundy division of CIBC World Markets Inc. (referred to as *CIBC WM*). CIBC ISI and CIBC WM are wholly-owned subsidiaries of CIBC.

CAMI may pay sales commissions and trailing commissions to these dealers and firms in connection with the sale of units of the Fund. These dealers and other firms may pay a portion of these sales commissions and trailing commissions to their advisors who sell units of the Fund to investors.

#### *Brokerage Arrangements and Soft Dollars*

The Portfolio Advisor makes decisions, including the selection of markets and dealers and the negotiation of commissions, with respect to the purchase and sale of portfolio securities, certain derivative products and the execution of portfolio transactions. Brokerage business may be allocated by the Portfolio Advisor to CIBC WM and CIBC World Markets Corp., each a subsidiary of CIBC. CIBC WM and CIBC World Markets Corp. may also earn spreads on the sale of fixed income securities, other securities, and certain derivative products to the Fund. A spread is the difference between the bid and ask prices for a security in the applicable marketplace, with respect to the execution of portfolio transactions. The spread will differ based upon various factors such as the nature and liquidity of the security.

Dealers, including CIBC WM and CIBC World Markets Corp., may furnish goods and services, other than order execution, when CAMI processes trades through them (referred to in the industry as "soft-dollar" arrangements). These goods and services are paid for with a portion of brokerage commissions and assist CAMI with investment decision-making services for the Fund or relate directly to the execution of portfolio transactions on behalf of the Fund.

The fees and spreads for services of the Custodian directly related to the execution of portfolio transactions by the Fund are paid by CAMI and/or dealer(s) directed by CAMI, up to the amount of the credits generated under soft dollar arrangements from trading on behalf of the Fund during that month.

In addition, the Manager may enter into commission recapture arrangements with certain dealers with respect to the Fund. Any commission recaptured will be paid to the Fund.

During the period, the Fund paid brokerage commissions and other fees of \$6,514 to CIBC WM; the Fund did not pay any brokerage commissions or other fees to CIBC World Markets Corp. Spreads associated with fixed income and other securities are not ascertainable and, for that reason, cannot be included when determining these amounts.

*Fund Transactions*

The Fund may enter into one or more of the following transactions (referred to as the *Related Party Transactions*) in reliance on the standing instructions issued by the Independent Review Committee (referred to as the *IRC*):

- invest in or hold equity securities of CIBC or issuers related to a portfolio sub-advisor;
- invest in or hold non-exchange-traded debt securities of CIBC or an issuer related to CIBC, with terms-to-maturity of 365 days or more, issued in a primary offering and in the secondary market;
- make an investment in the securities of an issuer for which CIBC WM, CIBC World Markets Corp., or any affiliate of CIBC (referred to as a *Related Dealer* or the *Related Dealers*) acts as an underwriter during the offering of the securities or at any time during the 60-day period following the completion of the offering of such securities (in the case of a “private placement” offering, in accordance with the Private Placement Relief Order and the policies and procedures relating to such investment);
- purchase equity or debt securities from, or sell them to, a Related Dealer, where it is acting as principal;
- undertake currency and currency derivative transactions where a related party is the counterparty;
- purchase securities from or sell securities to another investment fund or a managed account managed by the Manager or an affiliate (referred to as *inter-fund trades* or *cross-trades*); and
- engage in in-specie transfers by receiving portfolio securities from, or delivering portfolio securities to, a managed account or another investment fund managed by the Manager or an affiliate, in respect of a purchase or redemption of units of the Fund, subject to certain conditions.

At least annually, the IRC reviews the Related Party Transactions for which they have issued standing instructions. The IRC is required to advise the Canadian securities regulatory authorities, after a matter has been referred to or reported to it by the Manager, if it determines that an investment decision was not made in accordance with conditions imposed by securities legislation or the IRC in any Related Party Transactions requiring its approval.

*Custodian*

CIBC Mellon Trust Company is the custodian of the Fund (referred to as the *Custodian*). The Custodian holds all cash and securities for the Fund and ensures that those assets are kept separate from any other cash or securities that the custodian might be holding. The Custodian also provides other services to the Fund including record-keeping and processing of foreign exchange transactions. The fees and spreads for services of the Custodian directly related to the execution of portfolio transactions by the Fund are paid by CAMI and/or dealer(s) directed by CAMI, up to the amount of the credits generated under soft dollar arrangements from trading on behalf of the Fund during that month. All other fees and spreads for the services of the Custodian are paid by the Manager and charged to the Fund on a recoverable basis. CIBC owns a 50% interest in the Custodian.

*Service Provider*

CIBC Mellon Global Securities Services Company (referred to as *CIBC GSS*) provides certain services to the Fund, including securities lending, fund accounting and reporting, and portfolio valuation. Such servicing fees are paid by the Manager and charged to the Fund on a recoverable basis. CIBC indirectly owns a 50% interest in CIBC GSS.

## Renaissance Global Science & Technology Fund

### Financial Highlights

The following tables show selected key financial information about the Fund and are intended to help you understand the Fund's financial performance for the period ended August 31.

#### The Fund's Net Assets per Unit<sup>1</sup> - Class A Units

	2021	2020	2019	2018	2017
<b>Net Assets, beginning of period</b>	\$ 135.25	\$ 90.80	\$ 85.32	\$ 64.40	\$ 51.70
<b>Increase (decrease) from operations:</b>					
Total revenue	\$ 0.93	\$ 0.95	\$ 1.21	\$ 0.54	\$ 0.42
Total expenses	(3.86)	(2.99)	(2.31)	(2.13)	(1.74)
Realized gains (losses) for the period	22.55	19.34	11.51	6.96	4.03
Unrealized gains (losses) for the period	8.78	28.78	(4.72)	15.40	9.67
<b>Total increase (decrease) from operations<sup>2</sup></b>	\$ 28.40	\$ 46.08	\$ 5.69	\$ 20.77	\$ 12.38
<b>Distributions:</b>					
From income (excluding dividends)	\$ —	\$ —	\$ —	\$ —	\$ —
From dividends	—	—	—	—	—
From capital gains	—	—	—	—	—
Return of capital	—	—	—	—	—
<b>Total Distributions<sup>3</sup></b>	\$ —	\$ —	\$ —	\$ —	\$ —
<b>Net Assets, end of period</b>	\$ 164.04	\$ 135.25	\$ 90.80	\$ 85.32	\$ 64.40

<sup>1</sup> This information is derived from the Fund's audited annual financial statements.

<sup>2</sup> Net assets and distributions are based on the actual number of units outstanding at the relevant time. The total increase (decrease) from operations is based on the weighted average number of units outstanding during the period.

<sup>3</sup> Distributions were paid in cash, reinvested in additional units of the Fund, or both.

#### Ratios and Supplemental Data - Class A Units

	2021	2020	2019	2018	2017
<b>Total Net Asset Value (000s)<sup>4</sup></b>	\$ 190,670	\$ 131,534	\$ 62,658	\$ 55,613	\$ 28,961
<b>Number of Units Outstanding<sup>4</sup></b>	1,162,364	972,530	690,086	651,853	449,741
<b>Management Expense Ratio<sup>5</sup></b>	2.41%	2.52%	2.60%	2.71%	2.90%
<b>Management Expense Ratio before waivers or absorptions<sup>5</sup></b>	2.44%	2.52%	2.62%	2.71%	2.98%
<b>Trading Expense Ratio<sup>7</sup></b>	0.11%	0.11%	0.10%	0.05%	0.05%
<b>Portfolio Turnover Rate<sup>8</sup></b>	87.73%	94.92%	101.18%	39.84%	54.64%
<b>Net Asset Value per Unit</b>	\$ 164.04	\$ 135.25	\$ 90.80	\$ 85.32	\$ 64.40

<sup>4</sup> This information is presented as at August 31 of the period(s) shown.

<sup>5</sup> Management expense ratio is based on the total expenses of the fund (excluding commissions and other portfolio transaction costs), incurred by or allocated to a class of units for the period shown, expressed as an annualized percentage of the daily average net asset value of that class during the period.

<sup>6</sup> The decision to waive and/or absorb management fees and operating expenses is at the discretion of the Manager. The practice of waiving and/or absorbing management fees and operating expenses may continue indefinitely or may be terminated at any time without notice to unitholders.

<sup>7</sup> The trading expense ratio represents total commissions and other portfolio transaction costs before income taxes expressed as an annualized percentage of the daily average net asset value during the period. Spreads associated with fixed income securities trading are not ascertainable and, for that reason, are not included in the trading expense ratio calculation.

<sup>8</sup> The portfolio turnover rate indicates how actively the portfolio advisor and/or portfolio sub-advisor manages the portfolio investments. A portfolio turnover rate of 100% is equivalent to a fund buying and selling all of the securities in its portfolio once in the course of the period. The higher a portfolio turnover rate in a period, the greater the trading costs payable by a fund in the period, and the greater the chance of an investor receiving taxable capital gains in the year. There is not necessarily a relationship between a high turnover rate and the performance of a fund.

*Renaissance Global Science & Technology Fund*

**The Fund's Net Assets per Unit<sup>1</sup> - Class F Units**

	2021	2020	2019	2018	2017
<b>Net Assets, beginning of period</b>	\$ 18.11	\$ 12.03	\$ 11.17	\$ 8.33	\$ 6.61
<b>Increase (decrease) from operations:</b>					
Total revenue	\$ 0.13	\$ 0.11	\$ 0.16	\$ 0.08	\$ 0.06
Total expenses	(0.30)	(0.25)	(0.18)	(0.16)	(0.14)
Realized gains (losses) for the period	3.00	2.39	1.48	0.87	0.50
Unrealized gains (losses) for the period	1.16	5.52	(0.61)	1.86	1.34
<b>Total increase (decrease) from operations<sup>2</sup></b>	\$ 3.99	\$ 7.77	\$ 0.85	\$ 2.65	\$ 1.76
<b>Distributions:</b>					
From income (excluding dividends)	\$ —	\$ —	\$ —	\$ —	\$ —
From dividends	—	—	—	—	—
From capital gains	—	—	—	—	—
Return of capital	—	—	—	—	—
<b>Total Distributions<sup>3</sup></b>	\$ —	\$ —	\$ —	\$ —	\$ —
<b>Net Assets, end of period</b>	\$ 22.22	\$ 18.11	\$ 12.03	\$ 11.17	\$ 8.33

<sup>1</sup> This information is derived from the Fund's audited annual financial statements.

<sup>2</sup> Net assets and distributions are based on the actual number of units outstanding at the relevant time. The total increase (decrease) from operations is based on the weighted average number of units outstanding during the period.

<sup>3</sup> Distributions were paid in cash, reinvested in additional units of the Fund, or both.

**Ratios and Supplemental Data - Class F Units**

	2021	2020	2019	2018	2017
<b>Total Net Asset Value (000s)<sup>4</sup></b>	\$ 75,379	\$ 55,050	\$ 7,311	\$ 5,663	\$ 1,421
<b>Number of Units Outstanding<sup>4</sup></b>	3,392,637	3,039,361	607,907	506,937	170,616
<b>Management Expense Ratio<sup>5</sup></b>	1.27%	1.39%	1.45%	1.49%	1.73%
<b>Management Expense Ratio before waivers or absorptions<sup>5</sup></b>	1.29%	1.39%	1.45%	1.50%	1.73%
<b>Trading Expense Ratio<sup>7</sup></b>	0.11%	0.11%	0.10%	0.05%	0.05%
<b>Portfolio Turnover Rate<sup>8</sup></b>	87.73%	94.92%	101.18%	39.84%	54.64%
<b>Net Asset Value per Unit</b>	\$ 22.22	\$ 18.11	\$ 12.03	\$ 11.17	\$ 8.33

<sup>4</sup> This information is presented as at August 31 of the period(s) shown.

<sup>5</sup> Management expense ratio is based on the total expenses of the fund (excluding commissions and other portfolio transaction costs), incurred by or allocated to a class of units for the period shown, expressed as an annualized percentage of the daily average net asset value of that class during the period.

<sup>6</sup> The decision to waive and/or absorb management fees and operating expenses is at the discretion of the Manager. The practice of waiving and/or absorbing management fees and operating expenses may continue indefinitely or may be terminated at any time without notice to unitholders.

<sup>7</sup> The trading expense ratio represents total commissions and other portfolio transaction costs before income taxes expressed as an annualized percentage of the daily average net asset value during the period. Spreads associated with fixed income securities trading are not ascertainable and, for that reason, are not included in the trading expense ratio calculation.

<sup>8</sup> The portfolio turnover rate indicates how actively the portfolio advisor and/or portfolio sub-advisor manages the portfolio investments. A portfolio turnover rate of 100% is equivalent to a fund buying and selling all of the securities in its portfolio once in the course of the period. The higher a portfolio turnover rate in a period, the greater the trading costs payable by a fund in the period, and the greater the chance of an investor receiving taxable capital gains in the year. There is not necessarily a relationship between a high turnover rate and the performance of a fund.

*Renaissance Global Science & Technology Fund*

**The Fund's Net Assets per Unit<sup>1</sup> - Class O Units**

	2021	2020	2019	2018	2017
<b>Net Assets, beginning of period</b>	\$ 236.32	\$ 154.69	\$ 141.62	\$ 104.03	\$ 81.13
<b>Increase (decrease) from operations:</b>					
Total revenue	\$ 1.41	\$ 1.67	\$ 2.04	\$ 0.86	\$ 0.67
Total expenses	(0.47)	(0.47)	(0.29)	(0.15)	(0.12)
Realized gains (losses) for the period	45.33	33.49	19.39	11.69	6.44
Unrealized gains (losses) for the period	(2.21)	47.28	(8.37)	25.20	15.89
<b>Total increase (decrease) from operations<sup>2</sup></b>	\$ 44.06	\$ 81.97	\$ 12.77	\$ 37.60	\$ 22.88
<b>Distributions:</b>					
From income (excluding dividends)	\$ —	\$ —	\$ —	\$ —	\$ —
From dividends	—	—	—	—	—
From capital gains	—	—	—	—	—
Return of capital	—	—	—	—	—
<b>Total Distributions<sup>3</sup></b>	\$ —	\$ —	\$ —	\$ —	\$ —
<b>Net Assets, end of period</b>	\$ 293.66	\$ 236.32	\$ 154.69	\$ 141.62	\$ 104.03

<sup>1</sup> This information is derived from the Fund's audited annual financial statements.

<sup>2</sup> Net assets and distributions are based on the actual number of units outstanding at the relevant time. The total increase (decrease) from operations is based on the weighted average number of units outstanding during the period.

<sup>3</sup> Distributions were paid in cash, reinvested in additional units of the Fund, or both.

**Ratios and Supplemental Data - Class O Units**

	2021	2020	2019	2018	2017
<b>Total Net Asset Value (000s)<sup>4</sup></b>	\$ 37,793	\$ 1,470	\$ 877	\$ 823	\$ 597
<b>Number of Units Outstanding<sup>4</sup></b>	128,696	6,220	5,672	5,809	5,735
<b>Management Expense Ratio<sup>5</sup></b>	0.00%	0.00%	0.00%	0.00%	0.00%
<b>Management Expense Ratio before waivers or absorptions<sup>5</sup></b>	0.04%	0.10%	0.14%	0.22%	0.39%
<b>Trading Expense Ratio<sup>7</sup></b>	0.11%	0.11%	0.10%	0.05%	0.05%
<b>Portfolio Turnover Rate<sup>8</sup></b>	87.73%	94.92%	101.18%	39.84%	54.64%
<b>Net Asset Value per Unit</b>	\$ 293.66	\$ 236.32	\$ 154.69	\$ 141.62	\$ 104.03

<sup>4</sup> This information is presented as at August 31 of the period(s) shown.

<sup>5</sup> Management expense ratio is based on the total expenses of the fund (excluding commissions and other portfolio transaction costs), incurred by or allocated to a class of units for the period shown, expressed as an annualized percentage of the daily average net asset value of that class during the period.

<sup>6</sup> The decision to waive and/or absorb management fees and operating expenses is at the discretion of the Manager. The practice of waiving and/or absorbing management fees and operating expenses may continue indefinitely or may be terminated at any time without notice to unitholders.

<sup>7</sup> The trading expense ratio represents total commissions and other portfolio transaction costs before income taxes expressed as an annualized percentage of the daily average net asset value during the period. Spreads associated with fixed income securities trading are not ascertainable and, for that reason, are not included in the trading expense ratio calculation.

<sup>8</sup> The portfolio turnover rate indicates how actively the portfolio advisor and/or portfolio sub-advisor manages the portfolio investments. A portfolio turnover rate of 100% is equivalent to a fund buying and selling all of the securities in its portfolio once in the course of the period. The higher a portfolio turnover rate in a period, the greater the trading costs payable by a fund in the period, and the greater the chance of an investor receiving taxable capital gains in the year. There is not necessarily a relationship between a high turnover rate and the performance of a fund.

## Management Fees

The Fund pays CAMI an annual management fee to cover the costs of managing the Fund. Management fees are based on the Fund's net asset value and are calculated daily and paid monthly. Management fees are paid to CAMI in consideration for providing, or arranging for the provision of, management, distribution, and portfolio advisory services. Advertising and promotional expenses, office overhead expenses related to the Manager's activities, and trailing commissions are paid by CAMI out of the management fees received from the Fund. The Fund is required to pay applicable taxes on the management fees paid to CAMI. Refer to the simplified prospectus for the annual management fee rate for each class of units.

For Class O units, the management fee is negotiated with and paid by, or as directed by, unitholders or dealers and discretionary managers on behalf of unitholders. Such Class O management fee will not exceed the Class F unit management fee rate.

The following table shows a breakdown of the services received in consideration of the management fees, as a percentage of the management fees collected from the Fund for the period ended August 31, 2021. These amounts do not include waived fees or absorbed expenses.

	Class A Units	Class F Units
Sales and trailing commissions paid to dealers	47.00%	0.00%
General administration, investment advice, and profit	53.00%	100.00%

## Past Performance

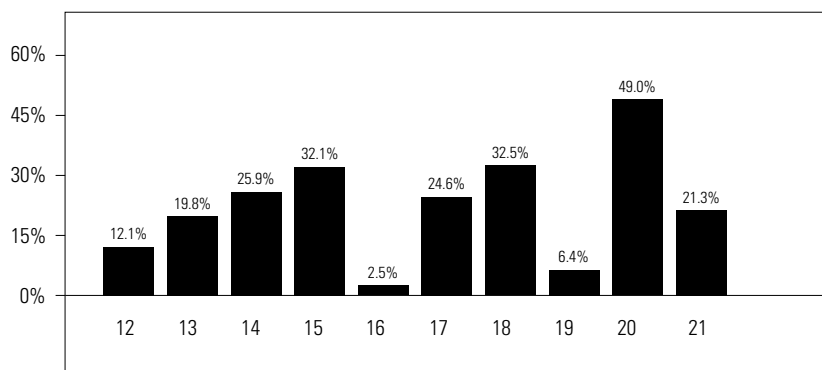
The performance data provided assumes reinvestment of distributions only and does not take into account sales, redemption, distribution, or other optional charges payable by any unitholder that would have reduced returns. Past performance does not necessarily indicate how a fund will perform in the future.

The Fund's returns are after the deduction of fees and expenses, and the difference in returns between classes of units is primarily due to differences in the management expense ratio. See *Financial Highlights* section for the management expense ratio.

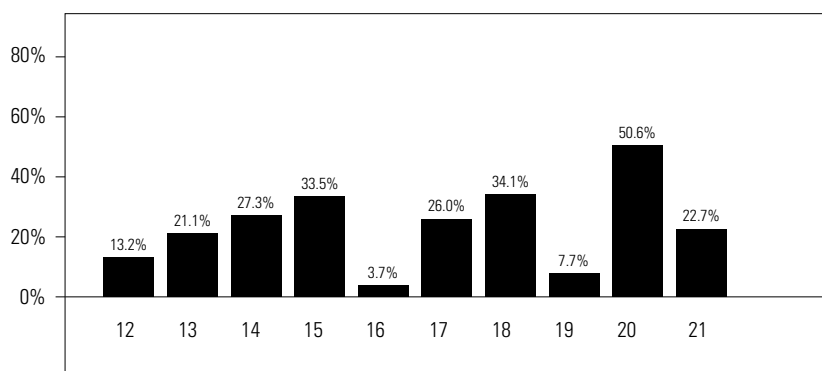
## Year-by-Year Returns

These bar charts show the annual performance of each class of units of the Fund for each of the periods shown, and illustrate how the performance has changed from period to period. These bar charts show, in percentage terms, how an investment made on September 1 would have increased or decreased by August 31, unless otherwise indicated.

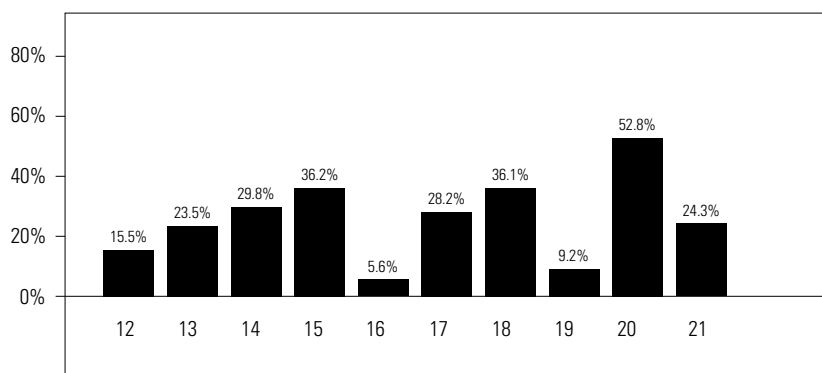
Class A Units



Class F Units



Class O Units



**Annual Compound Returns**

This table shows the annual compound return of each class of units of the Fund for each indicated period ended on August 31, 2021. The annual compound return is compared to the Fund's benchmarks.

The Fund's primary benchmarks are the MSCI World Information Technology Index and MSCI World Index.

During the period, the Fund's blended benchmark was changed to better reflect how the Fund is positioned.

The Fund's current blended benchmark (referred to as *Blended Benchmark*) is comprised of the following:

- 40% MSCI World Information Technology Index
- 40% MSCI World Healthcare Index
- 20% MSCI World Communication Services Index

The Fund's previous blended benchmark (referred to as *Previous Blended Benchmark*) was comprised of the following:

- 60% MSCI World Information Technology Index
- 20% MSCI World Communication Services Index
- 20% MSCI World Healthcare Index



*Renaissance Global Science & Technology Fund*

	<i>1 Year</i>	<i>3 Years</i>	<i>5 Years</i>	<i>10 Years</i>	<i>or</i>	<i>Since Inception</i>	<i>Inception Date</i>
Class A units	21.3%	24.4%	26.0%	21.9%			October 28, 1996
MSCI World Information Technology Index	27.5%	27.5%	28.5%	25.2%			
MSCI World Index	26.4%	14.4%	14.6%	15.7%			
Blended Benchmark	25.5%	21.2%	19.3%	20.4%			
Previous Blended Benchmark	27.0%	23.8%	22.3%	21.7%			
Class F units	22.7%	25.8%	27.4%	23.3%			December 14, 2000
MSCI World Information Technology Index	27.5%	27.5%	28.5%	25.2%			
MSCI World Index	26.4%	14.4%	14.6%	15.7%			
Blended Benchmark	25.5%	21.2%	19.3%	20.4%			
Previous Blended Benchmark	27.0%	23.8%	22.3%	21.7%			
Class O units	24.3%	27.5%	29.3%	25.4%			January 2, 2001
MSCI World Information Technology Index	27.5%	27.5%	28.5%	25.2%			
MSCI World Index	26.4%	14.4%	14.6%	15.7%			
Blended Benchmark	25.5%	21.2%	19.3%	20.4%			
Previous Blended Benchmark	27.0%	23.8%	22.3%	21.7%			

**MSCI World Communication Services Index** is designed to capture the large and mid cap segments across 23 Developed Markets (DM) countries. All securities in the index are classified in the Communication Services sector as per the Global Industry Classification Standard (GICS).

**MSCI World Healthcare Index** is a market-weighted Index composed of securities traded in 22 of the world's most developed countries. Securities are listed on exchanges in the U.S., Europe, Canada, Australia, New Zealand, and the Far East. The health care sector consists of several industry groups including health care equipment and services, pharmaceuticals and biotechnology.

**MSCI World Index** is a free float-adjusted market capitalization index composed of companies representative of the market structure of developed market countries in North America, Europe and the Asia/Pacific region.

**MSCI World Information Technology Index** is designed to capture the large and mid-cap segments across 23 Developed Markets (DM) countries. All securities in the index are classified in the Information Technology sector as per the Global Industry Classification Standard (GICS).

A discussion of the Fund's relative performance compared to its primary benchmarks can be found in *Results of Operations*.

*Renaissance Global Science & Technology Fund*

**Summary of Investment Portfolio** (as at August 31, 2021)

The summary of investment portfolio may change due to ongoing portfolio transactions of the investment fund. A quarterly update is available by visiting [www.renaissanceinvestments.ca](http://www.renaissanceinvestments.ca). The Top Positions table shows a fund's 25 largest positions. For funds with fewer than 25 positions in total, all positions are shown. Cash and cash equivalents are shown in total as one position.

<i>Portfolio Breakdown</i>	<i>% of Net Asset Value</i>	<i>Top Positions</i>	<i>% of Net Asset Value</i>
Biotechnology	17.5	Microsoft Corp.	8.9
Software	16.9	Alphabet Inc., Class 'A'	7.9
IT Services	13.3	Takeda Pharmaceutical Co. Ltd.	5.6
Interactive Media & Services	12.2	CVS Health Corp.	5.2
Semiconductors & Semiconductor Equipment	8.6	IQVIA Holdings Inc.	4.8
Health Care Equipment & Supplies	6.2	Ascendis Pharma AS, ADR	4.2
Pharmaceuticals	5.6	Mastercard Inc., Class 'A'	4.0
Health Care Providers & Services	5.2	Alcon Inc.	3.9
Life Sciences Tools & Services	4.8	ASML Holding NV	3.8
Other Equities	4.6	Amazon.com Inc.	3.7
Internet & Direct Marketing Retail	3.7	Sarepta Therapeutics Inc.	3.4
Cash & Cash Equivalents	1.4	ServiceNow Inc.	3.4
		Tencent Holdings Ltd., ADR	3.1
		Grifols SA	3.0
		Sea Ltd., ADR	2.7
		Twilio Inc.	2.7
		Marvell Technology Inc.	2.5
		Deciphera Pharmaceuticals Inc.	2.5
		Zscaler Inc.	2.4
		Shopify Inc., Class 'A'	2.4
		Taiwan Semiconductor Manufacturing Co. Ltd., ADR	2.4
		Silk Road Medical Inc.	2.4
		Avalara Inc.	2.3
		CloudFlare Inc., Class 'A'	2.2
		Mersana Therapeutics Inc.	2.1

**A note on forward-looking statements**

The management report of fund performance may contain forward-looking statements. Forward-looking statements include statements that are predictive in nature, that depend upon or refer to future events or conditions, or that include words such as “expects”, “anticipates”, “intends”, “plans”, “believes”, “estimates”, or other similar wording. In addition, any statements that may be made concerning future performance, strategies, or prospects and possible future actions taken by the fund, are also forward-looking statements. Forward-looking statements are not guarantees of future performance. These statements involve known and unknown risks, uncertainties, and other factors that may cause the actual results and achievements of the fund to differ materially from those expressed or implied by such statements. Such factors include, but are not limited to: general economic, market, and business conditions; fluctuations in securities prices, interest rates, and foreign currency exchange rates; changes in government regulations; and catastrophic events.

The above list of important factors that may affect future results is not exhaustive. Before making any investment decisions, we encourage you to consider these and other factors carefully. CIBC Asset Management Inc. does not undertake, and specifically disclaims, any obligation to update or revise any forward-looking statements, whether as a result of new information, future developments, or otherwise prior to the release of the next management report of fund performance.

---



**Renaissance Investments**

1500 Robert-Bourassa Boulevard, Suite 800  
Montreal, Quebec  
H3A 3S6  
1-888-888-3863

**Website**

[www.renaissanceinvestments.ca](http://www.renaissanceinvestments.ca)

CIBC Asset Management Inc., the manager and trustee of the Renaissance Investments family of funds, is a wholly-owned subsidiary of Canadian Imperial Bank of Commerce. Please read the Renaissance Investments family of funds, Axiom Portfolios and Renaissance Private Pools simplified prospectus before investing. To obtain a copy of the simplified prospectus, call 1-888-888-3863, email us at [info@renaissanceinvestments.ca](mailto:info@renaissanceinvestments.ca), or ask your advisor.

Renaissance Investments® is offered by and is a registered trademark of CIBC Asset Management Inc.